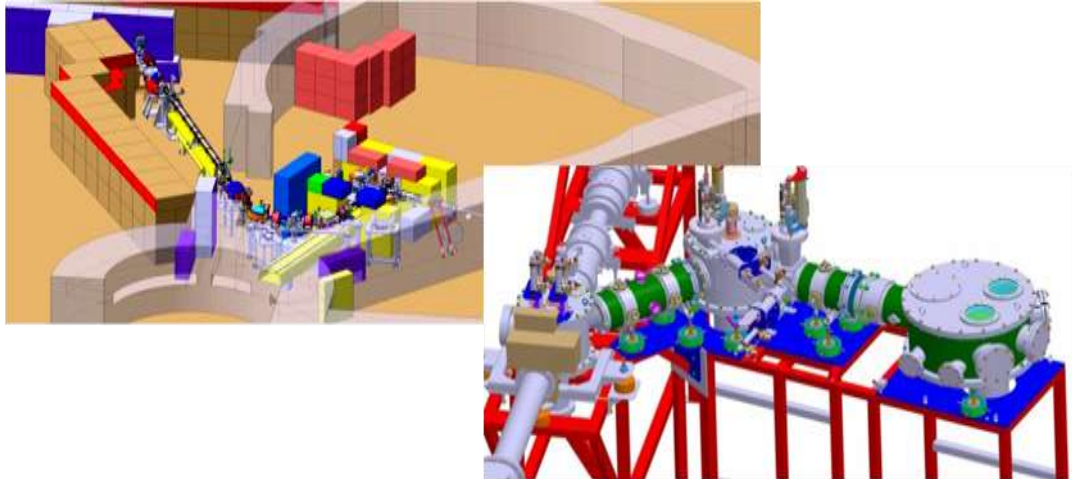


IPN FACILITIES

POLE ALTO

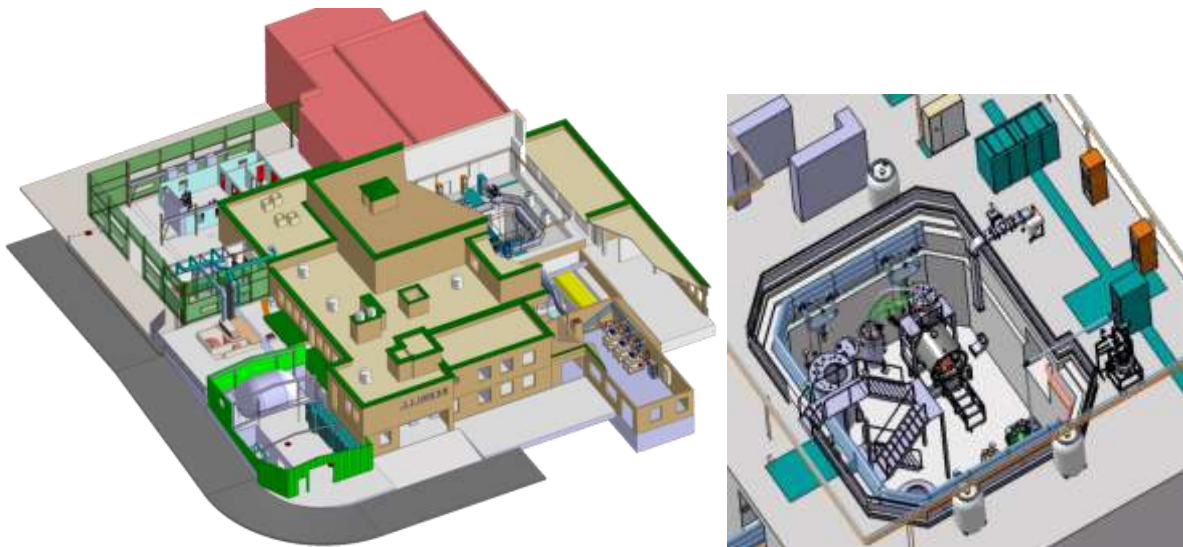
The design team was in charge of the implementation studies of all the ALTO components at the Tandem d'Orsay, the development of the online ALTOPHY electrostatic beam transport line and of the BEDO line for physics.



Implantation of the accelerator ALTO – Transport beamline ALTOPHY

PLATFORM SUPRATECH

The design team conducted the implantation studies of all the equipment needed to assemble the Supratech platform, condition and test of the superconducting cavities and cryomodules.



Model of the platform Supratech - Pit