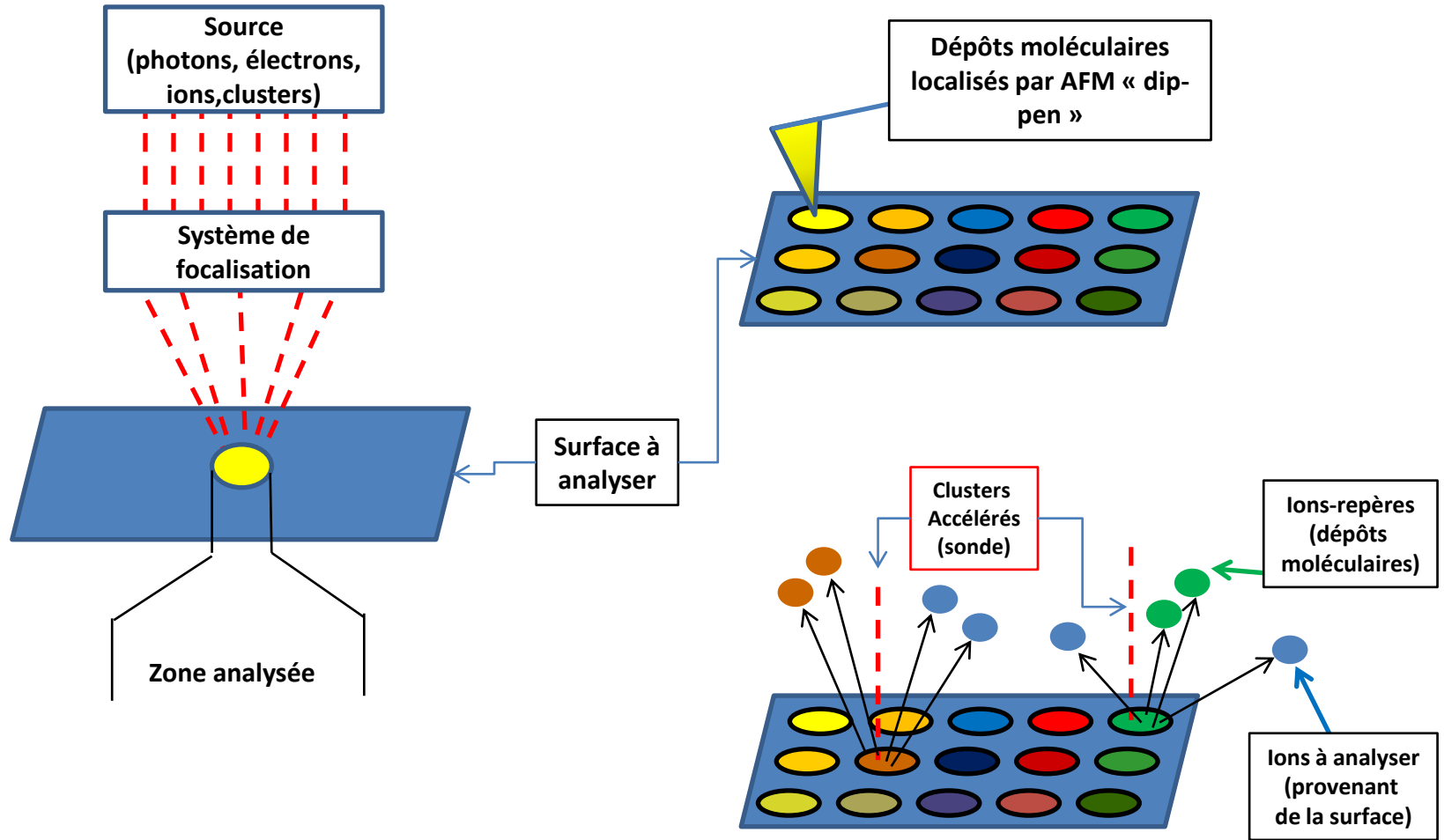


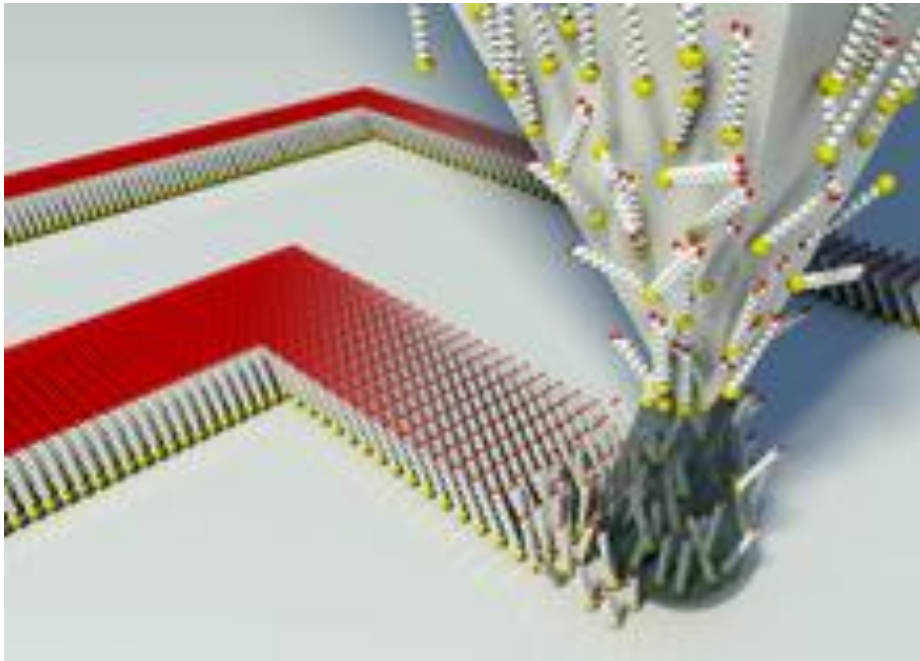
ANAITIS :

Analyse NANométrique Ionique et Topographique de Surfaces



- Corrélations entre ions (surface/référence) → LOCALISATION
- Pas de focalisation du faisceau-sonde nécessaire
- Analyse topographique : corrélation topographie → composition

Dip-pen nanolithographie : principe



Encre moléculaire

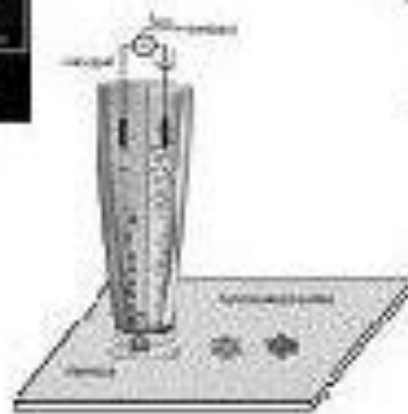
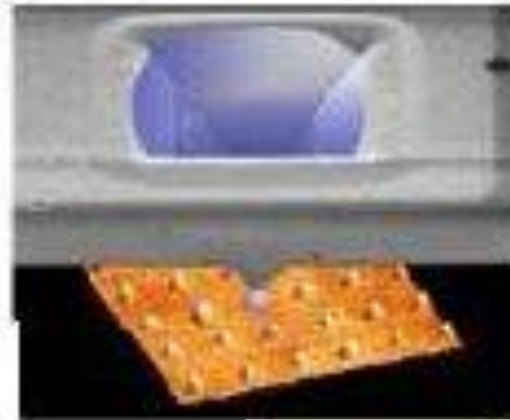
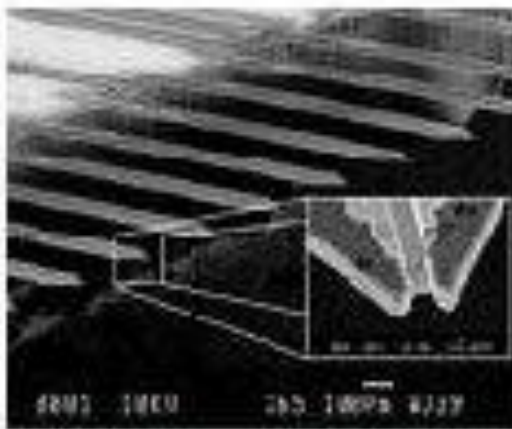
Ménisque d'eau

- Dépôts très localisés (sub 100nm)
- Très large variété d'«encres» disponibles

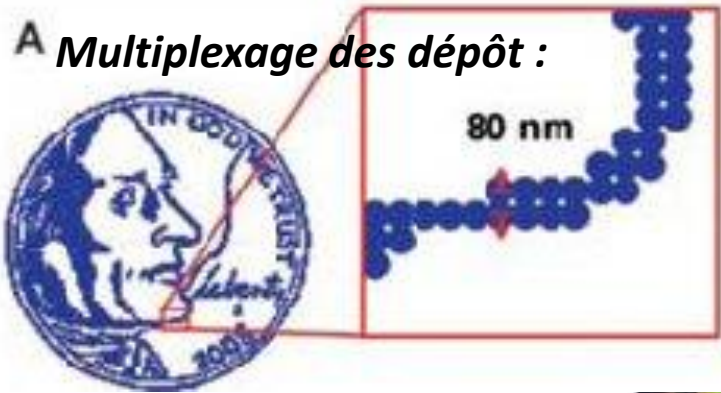
Dépôts moléculaires localisés

ANAITIS :

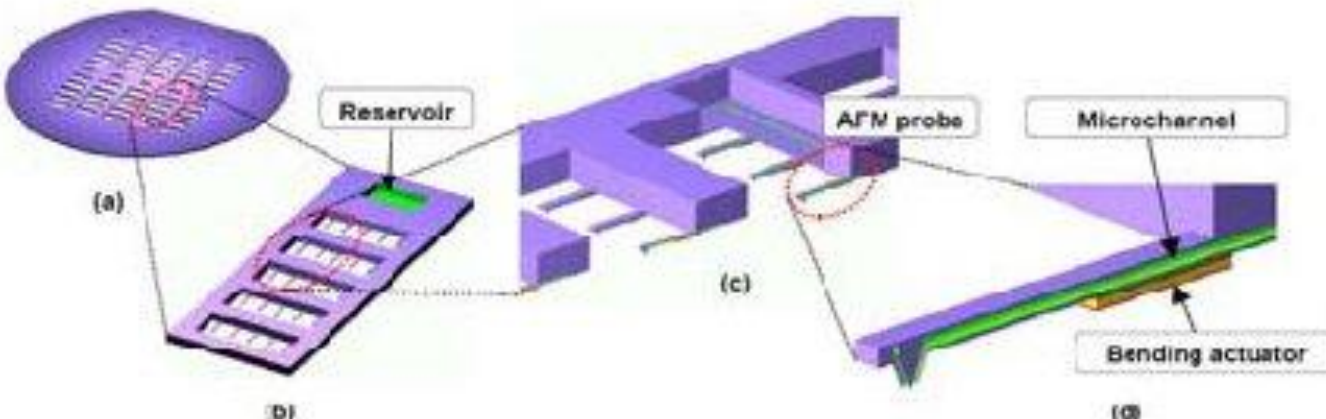
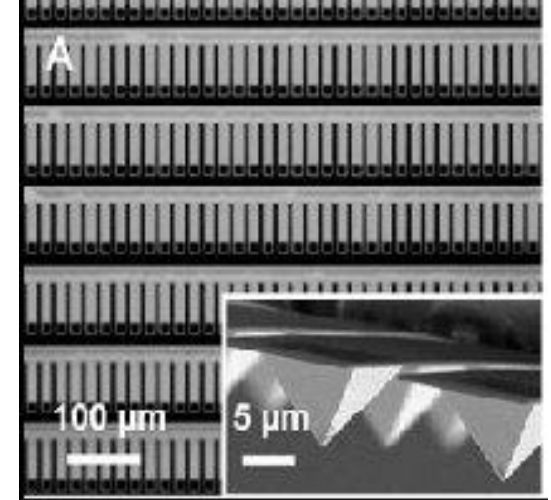
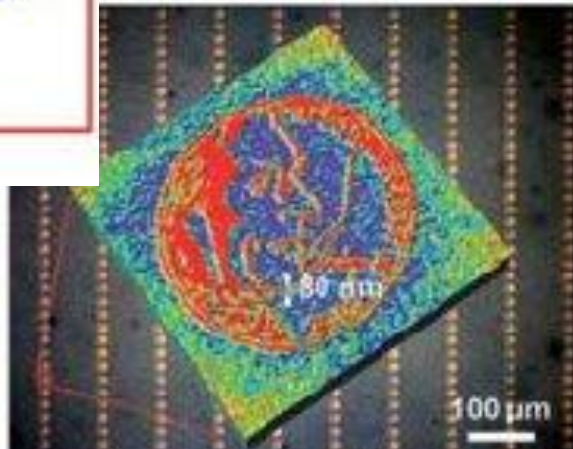
Analyse NANométrique Ionique et Topographique de Surfaces



Dépôts multiples de molécules différentes
sur larges surfaces ?

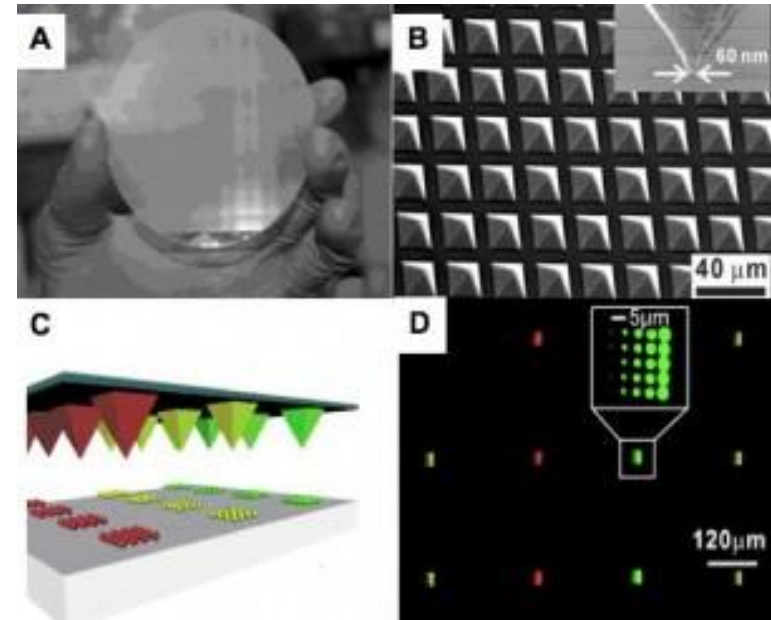
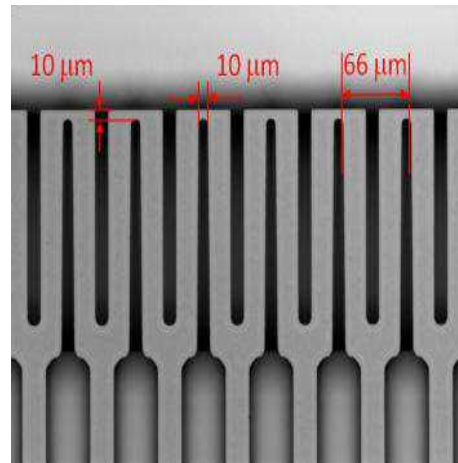
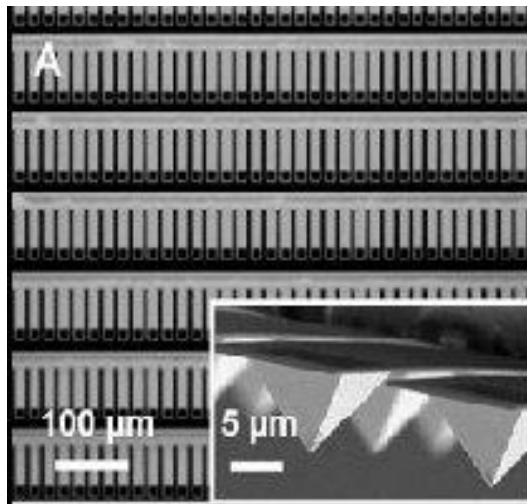


C.A. Mirkin et al. ,
 Angewandte Chemie International Edition
 45, 7220 (2006)



ANAITIS :

Analyse NANométrique Ionique et Topographique de Surfaces



Imagerie de surfaces biologiques :

